



**COMMONWEALTH OF KENTUCKY
TRANSPORTATION CABINET**

Frankfort, Kentucky 40622
www.transportation.ky.gov/

Matthew G. Bevin
Governor

Greg Thomas
Secretary

March 11, 2019

CALL NO. 105
CONTRACT ID NO. 191011
ADDENDUM # 1

Subject: Leslie County, STP BRO 4211 (046)
Letting March 22, 2019

- (1) Revised - Proposal Bid Items - Pages 257 to 259 (a) of 259.
- (2) Revised - Sheet Plans - R2D, R5, R5A, R5B, R9.

Proposal revisions are available at <http://transportation.ky.gov/Construction-Procurement/>.

If you have any questions, please contact us at 502-564-3500.

Sincerely,

A handwritten signature in cursive script that reads "Rachel Mills".

Rachel Mills, P.E.
Director
Division of Construction Procurement

RM:mw
Enclosures



An Equal Opportunity Employer M/F/D

PROPOSAL BID ITEMS

Report Date 3/11/19

Section: 0001 - PAVING

LINE	BID CODE	ALT	DESCRIPTION	QUANTITY	UNIT	UNIT PRIC	FP	AMOUNT
0010	00003		CRUSHED STONE BASE (REVISED: 3-11-19)	3,411.00	TON		\$	
0020	00020		TRAFFIC BOUND BASE	100.00	TON		\$	
0030	00100		ASPHALT SEAL AGGREGATE	32.00	TON		\$	
0040	00103		ASPHALT SEAL COAT	3.80	TON		\$	
0050	00214		CL3 ASPH BASE 1.00D PG64-22 (REVISED: 3-11-19)	3,088.00	TON		\$	
0060	00339		CL3 ASPH SURF 0.38D PG64-22 (REVISED: 3-11-19)	537.00	TON		\$	
0070	00356		ASPHALT MATERIAL FOR TACK	6.80	TON		\$	
0080	02101		CEM CONC ENT PAVEMENT-8 IN	107.00	SQYD		\$	

Section: 0002 - ROADWAY

LINE	BID CODE	ALT	DESCRIPTION	QUANTITY	UNIT	UNIT PRIC	FP	AMOUNT
0090	00078		CRUSHED AGGREGATE SIZE NO 2	175.00	TON		\$	
0100	01000		PERFORATED PIPE-4 IN	42.00	LF		\$	
0110	01010		NON-PERFORATED PIPE-4 IN	104.00	LF		\$	
0120	01020		PERF PIPE HEADWALL TY 1-4 IN	1.00	EACH		\$	
0130	01691		FLUME INLET TYPE 2	2.00	EACH		\$	
0140	01718		REMOVE INLET	3.00	EACH		\$	
0150	01890		ISLAND HEADER CURB TYPE 1	100.00	LF		\$	
0160	01897		ASPHALT WEDGE CURB	94.00	LF		\$	
0170	01987		DELINEATOR FOR GUARDRAIL BI DIRECTIONAL WHITE	44.00	EACH		\$	
0180	01990		DELINEATOR FOR BARRIER WALL-B/W	6.00	EACH		\$	
0190	02014		BARRICADE-TYPE III	10.00	EACH		\$	
0200	02091		REMOVE PAVEMENT	1,112.00	SQYD		\$	
0210	02200		ROADWAY EXCAVATION	109,506.00	CUYD		\$	
0220	02203		STRUCTURE EXCAV-UNCLASSIFIED (REVISED: 3-11-19)	19.00	CUYD		\$	
0230	02242		WATER	518.00	MGAL		\$	
0240	02351		GUARDRAIL-STEEL W BEAM-S FACE	1,412.50	LF		\$	
0250	02360		GUARDRAIL TERMINAL SECTION NO 1	4.00	EACH		\$	
0260	02363		GUARDRAIL CONNECTOR TO BRIDGE END TY A	4.00	EACH		\$	
0270	02367		GUARDRAIL END TREATMENT TYPE 1	1.00	EACH		\$	
0280	02381		REMOVE GUARDRAIL	587.50	LF		\$	
0290	02391		GUARDRAIL END TREATMENT TYPE 4A	2.00	EACH		\$	
0300	02397		TEMP GUARDRAIL	237.50	LF		\$	
0310	02429		RIGHT-OF-WAY MONUMENT TYPE 1	16.00	EACH		\$	
0320	02431		WITNESS R/W MONUMENT TYPE 2	2.00	EACH		\$	
0330	02432		WITNESS POST	6.00	EACH		\$	
0340	02488		CHANNEL LINING CLASS IV	467.00	CUYD		\$	
0350	02545		CLEARING AND GRUBBING 4.0 ACRES	1.00	LS		\$	
0360	02551		CONCRETE-CLASS A FOR STEPS	.50	CUYD		\$	

PROPOSAL BID ITEMS

Report Date 3/11/19

LINE	BID CODE	ALT	DESCRIPTION	QUANTITY	UNIT	UNIT PRIC	FP	AMOUNT
0370	02555		CONCRETE-CLASS B (REVISED: 3-11-19)	43.00	CUYD		\$	
0380	02562		TEMPORARY SIGNS	750.00	SQFT		\$	
0390	02585		EDGE KEY	96.00	LF		\$	
0400	02596		FABRIC-GEOTEXTILE TYPE I	28.00	SQYD		\$	
0410	02599		FABRIC-GEOTEXTILE TYPE IV	4,540.00	SQYD		\$	
0420	02619		HANDRAIL-TYPE A (REVISED: 3-11-19)	158.00	LF		\$	
0430	02625		REMOVE HEADWALL	2.00	EACH		\$	
0440	02650		MAINTAIN & CONTROL TRAFFIC	1.00	LS		\$	
0450	02651		DIVERSIONS (BY-PASS DETOURS)	1.00	LS		\$	
0460	02671		PORTABLE CHANGEABLE MESSAGE SIGN	3.00	EACH		\$	
0470	02673		PRECAST VEHICLE STOP (REVISED: 3-11-19)	50.00	LF		\$	
0480	02690		SAFELoading	23.00	CUYD		\$	
0490	02697		EDGE LINE RUMBLE STRIPS	2,722.00	LF		\$	
0500	02701		TEMP SILT FENCE	2,400.00	LF		\$	
0510	02704		SILT TRAP TYPE B	10.00	EACH		\$	
0520	02705		SILT TRAP TYPE C	5.00	EACH		\$	
0530	02707		CLEAN SILT TRAP TYPE B	10.00	EACH		\$	
0540	02708		CLEAN SILT TRAP TYPE C	5.00	EACH		\$	
0550	02720		SIDEWALK-4 IN CONCRETE (REVISED: 3-11-19)	71.00	SQYD		\$	
0560	02726		STAKING	1.00	LS		\$	
0570	02731		REMOVE STRUCTURE	1.00	LS		\$	
0580	03171		CONCRETE BARRIER WALL TYPE 9T	270.00	LF		\$	
0590	04933		TEMP SIGNAL 2 PHASE	2.00	EACH		\$	
0600	05950		EROSION CONTROL BLANKET	7,930.00	SQYD		\$	
0610	05952		TEMP MULCH	5,300.00	SQYD		\$	
0620	05953		TEMP SEEDING AND PROTECTION	5,300.00	SQYD		\$	
0630	05963		INITIAL FERTILIZER	.90	TON		\$	
0640	05964		MAINTENANCE FERTILIZER	.90	TON		\$	
0650	05985		SEEDING AND PROTECTION	10,600.00	SQYD		\$	
0660	05992		AGRICULTURAL LIMESTONE	16.80	TON		\$	
0670	06510		PAVE STRIPING-TEMP PAINT-4 IN	6,840.00	LF		\$	
0680	06514		PAVE STRIPING-PERM PAINT-4 IN	7,040.00	LF		\$	
0690	06547		PAVE STRIPING-THERMO-12 IN Y	2,115.00	LF		\$	
0700	06568		PAVE MARKING-THERMO STOP BAR-24IN	47.00	LF		\$	
0710	06574		PAVE MARKING-THERMO CURV ARROW	4.00	EACH		\$	
0720	08901		CRASH CUSHION TY VI CLASS BT TL2	2.00	EACH		\$	
0730	10020NS		FUEL ADJUSTMENT	30,319.00	DOLL	\$1.00	\$	\$30,319.00
0740	10030NS		ASPHALT ADJUSTMENT	12,878.00	DOLL	\$1.00	\$	\$12,878.00
0750	20206EC		PAVE MARK HANDICAP SYMBOL	1.00	EACH		\$	
0760	23158ES505		DETECTABLE WARNINGS	10.00	SQFT		\$	

Section: 0003 - DRAINAGE

LINE	BID CODE	ALT	DESCRIPTION	QUANTITY	UNIT	UNIT PRIC	FP	AMOUNT
0770	00464		CULVERT PIPE-24 IN	96.00	LF		\$	

PROPOSAL BID ITEMS

Report Date 3/11/19

LINE	BID CODE	ALT	DESCRIPTION	QUANTITY	UNIT	UNIT PRIC	FP	AMOUNT
0780	01208		PIPE CULVERT HEADWALL-24 IN	2.00	EACH		\$	
0790	01490		DROP BOX INLET TYPE 1	1.00	EACH		\$	
0800	01493		DROP BOX INLET TYPE 2	1.00	EACH		\$	
0810	02220		FLOWABLE FILL	8.30	CUYD		\$	
0820	02600		FABRIC GEOTEXTILE TY IV FOR PIPE	345.00	SQYD	\$2.00	\$	\$690.00

Section: 0004 - BRIDGE

LINE	BID CODE	ALT	DESCRIPTION	QUANTITY	UNIT	UNIT PRIC	FP	AMOUNT
0830	02231		STRUCTURE GRANULAR BACKFILL	319.00	CUYD		\$	
0840	02998		MASONRY COATING	363.00	SQYD		\$	
0850	03299		ARMORED EDGE FOR CONCRETE	119.60	LF		\$	
0860	08001		STRUCTURE EXCAVATION-COMMON	998.00	CUYD		\$	
0870	08002		STRUCTURE EXCAV-SOLID ROCK	263.00	CUYD		\$	
0880	08019		CYCLOPEAN STONE RIP RAP	634.00	TON		\$	
0890	08020		CRUSHED AGGREGATE SLOPE PROT	41.00	TON		\$	
0900	08033		TEST PILES	24.00	LF		\$	
0910	08039		PRE-DRILLING FOR PILES	297.00	LF		\$	
0920	08046		PILES-STEEL HP12X53	303.00	LF		\$	
0930	08094		PILE POINTS-12 IN	13.00	EACH		\$	
0940	08100		CONCRETE-CLASS A	174.80	CUYD		\$	
0950	08104		CONCRETE-CLASS AA	254.00	CUYD		\$	
0960	08150		STEEL REINFORCEMENT	7,298.00	LB		\$	
0970	08151		STEEL REINFORCEMENT-EPOXY COATED	53,411.00	LB		\$	
0980	08636		PRECAST PC I BEAM TYPE 5	580.00	LF		\$	
0990	21532ED		RAIL SYSTEM TYPE III	238.30	LF		\$	

Section: 0005 - WATERLINE

LINE	BID CODE	ALT	DESCRIPTION	QUANTITY	UNIT	UNIT PRIC	FP	AMOUNT
1000	14003		W CAP EXISTING MAIN	3.00	EACH		\$	
1010	14004		W DIRECTIONAL BORE	285.00	LF		\$	
1020	14008		W ENCASMENT STEEL BORED RANGE 3	115.00	LF		\$	
1030	14014		W ENCASMENT STEEL OPEN CUT RANGE 3	45.00	LF		\$	
1040	14019		W FIRE HYDRANT ASSEMBLY	2.00	EACH		\$	
1050	14022		W FLUSH HYDRANT ASSEMBLY	2.00	EACH		\$	
1060	14030		W METER RELOCATE	10.00	EACH		\$	
1070	14036		W PIPE DUCTILE IRON 06 INCH	2,700.00	LF		\$	
1080	14077		W SERV PE/PLST LONG SIDE 1 IN	5.00	EACH		\$	
1090	14080		W SERV PE/PLST LONG SIDE 3/4 IN	5.00	EACH		\$	
1100	14089		W TAPPING SLEEVE AND VALVE SIZE 1	4.00	EACH		\$	
1110	14093		W TIE-IN 04 INCH	1.00	EACH		\$	
1120	14094		W TIE-IN 06 INCH	3.00	EACH		\$	
1130	14105		W VALVE 06 INCH	8.00	EACH		\$	
1140	14125		W VAULT SPECIAL	1.00	EACH		\$	
1150	14132		W PRESSURE REDUCING VALVE 02 INCH	1.00	EACH		\$	
1160	14144		W LINE MARKER	15.00	EACH		\$	

LESLIE COUNTY
 STP BRO 4211 (046)
 191011

PROPOSAL BID ITEMS

Page 4 of 4

Report Date 3/11/19

LINE	BID CODE	ALT	DESCRIPTION	QUANTITY	UNIT	UNIT PRIC	FP	AMOUNT
1170	14153		W LEAK DETECTION METER	1.00	EACH		\$	

Section: 0006 - DEMOBILIZATION &/OR MOBILIZATION

LINE	BID CODE	ALT	DESCRIPTION	QUANTITY	UNIT	UNIT PRIC	FP	AMOUNT
1180	02568		MOBILIZATION	1.00	LS		\$	
1190	02569		DEMOBILIZATION	1.00	LS		\$	

GENERAL SUMMARY

ITEM	DESCRIPTION	UNIT	US 421	KY 406	STINNETT WENDOVER ROAD	PROJECT TOTALS
00078	CRUSHED AGGREGATE SIZE NO. 2	⑩ TON	1			175
01000	PERFORATED PIPE - 4 IN	LF	42			42
01010	NON-PERFORATED PIPE - 4 IN	LF	104			104
01020	PERF PIPE HEADWALL TYPE 1 - 4 IN	EACH	1			1
01691	FLUME INLET TYPE 2 (MODIFIED)	⑭ EACH	1	1		2
01718	REMOVE INLET	EACH	2	1		3
01890	ISLAND HEADER CURB TYPE 1	LF	100			100
01897	ASPHALT WEDGE CURB	LF		94		94
01987	DELINEATOR FOR GUARDRAIL - B/W	EACH	37	6	1	44
01990	DELINEATOR FOR BARRIER WALL - B/W	EACH	6			6
02014	BARRICADE-TYPE III	EACH	10			10
02091	REMOVE PAVEMENT	SOYD	1,112			1,112
02200	ROADWAY EXCAVATION	CU YD	109,261	229	16	109,506
02203	STRUCTURE EXCAVATION - UNCLASSIFIED	⑦ CU YD		19		19
02242	WATER	③ MGAL	415	87	16	518
02351	GUARDRAIL-STEEL W BEAM-S FACE	LF	1,312.5	100		1,412.5
02360	GUARDRAIL TERMINAL SECTION NO 1	EACH	4			4
02363	GUARDRAIL CONNECTOR TO BRIDGE END TYPE A	EACH	4			4
02367	GUARDRAIL END TREATMENT TYPE 1	EACH		1		1
02381	REMOVE GUARDRAIL	⑫ LF	587.5			587.5
02391	GUARDRAIL END TREATMENT TYPE 4A	EACH	1	1		2
02397	TEMPORARY GUARDRAIL	LF		237.5		237.5
02429	R/W MONUMENT TYPE 1	EACH	16			16
02431	WITNESS MONUMENT TYPE 2	EACH	2			2
02432	WITNESS POST	EACH	6			6
02488	CHANNEL LINING CLASS IV	⑧ CUYD	455	10		467
02545	CLEARING AND GRUBBING	② LS				1
02551	CONCRETE CLASS A FOR STEPS	CUYD		0.5		0.5
02555	CONCRETE CLASS B	CUYD		43		43
02562	TEMPORARY SIGNS	SQ FT	600	125	25	750
02568	MOBILIZATION	LS				1
02569	DEMOBILIZATION	LS				1
02585	EDGE KEY	LF	50	22	24	96
02596	FABRIC-GEOTEXILE TYPE I	⑮ SOYD		14		28
02599	FABRIC-GEOTEXILE TYPE IV	⑯ SOYD	4,288			4,540
02619	HANDRAIL TYPE A	LF		158		158
02625	REMOVE HEADWALL	EACH	1	1		2
02650	MAINTAIN & CONTROL TRAFFIC	LS				1
02651	DIVERSIONS (BY-PASS DETOURS)	LS		1		1
02671	PORTABLE CHANGEABLE MESSAGE SIGN	EACH	2	1		3
02673	PRECAST VEHICLE STOP	LF		50		50
02690	SAFELOADING	CU YD	15	8		23
02697	EDGE LINE RUMBLE STRIPS	LF	2,722			2,722
02701	TEMP SILT FENCE	LF	1,664	736		2,400
02704	SILT TRAP TYPE B	EACH	9		1	10
02705	SILT TRAP TYPE C	EACH	4	1		5
02707	CLEAN SILT TRAP TYPE B	EACH	9		1	10
02708	CLEAN SILT TRAP TYPE C	EACH	4	1		5
02720	SIDEWALK-4 IN CONCRETE	SOYD		71		71
02726	STAKING	LS				1
02731	REMOVE STRUCTURE	⑬ LS	1			1
03171	CONCRETE BARRIER WALL TYPE 9T	LF		270		270
04933	TEMPORARY SIGNAL-TWO PHASE	EACH	2			2
05950	EROSION CONTROL BLANKET	⑨ SQ YD	7,574	356		7,930
05952	TEMP MULCH	SO YD	4,600	700		5,300
05953	TEMP SEEDING AND PROTECTION	SO YD	4,600	700		5,300
05985	SEEDING AND PROTECTION	SO YD	9,200	1,400		10,600
05963	INITIAL FERTILIZER	TON	0.7	0.2		0.9
05964	20-10-10 FERTILIZER	TON	0.7	0.2		0.9
05992	AGRICULTURAL LIMESTONE	TON	13.1	3.7		16.8
06510	PAVE STRIPING-TEMP PAINT-4 IN	LF	5,140	1,700		6,840
06514	PAVE STRIPING-PERM PAINT-4 IN	⑩ LF	5,140	1,900		7,040
06547	PAVE STRIPING-THERMO-12 IN Y	LF	2,115			2,115
06568	PAVE MARKING-THERMO STOP BAR-24 IN	LF	11	16	20	47
06574	PAVE MARKING-THERMO CURVE ARROW	EACH	4			4
08901	CRASH CUSHION TY VI CLASS BT TL2	EACH		2		2
20206EC	PAVE MARKING-HANDICAP SYMBOL	EACH		1		1
23158E5505	DETECTABLE WARNINGS	SOFT		10		10
10020NS	FUEL ADJUSTMENT	DOLL	30,319			30,319
10030NS	ASPHALT ADJUSTMENT	DOLL	12,878			12,878

PAVING SUMMARY

ITEM CODE	ITEM	UNIT	US 421 TRAFFIC LANES	US 421 SHOULDERS	KY 406 TRAFFIC LANES	KY 406 SHOULDERS	STINNETT WENDOVER ROAD	ENTRANCES	PARKING LOT	KY 406 DIVERSION	TOTAL PROJECT
0339	CL3 ASPHALT SURFACE 0.38D PG 64-22	TON	347	48	83	13	15	16	15	---	537
0214	CL3 ASPHALT BASE 1.00D PG 64-22	TON	1,944	270	660	104	35	38	37	---	3,088
0003	CRUSHED STONE BASE	①⑪ TON	1,278	1,018	276	199	122	78	102	338	3,411
0100	ASPHALT SEAL AGGREGATE	⑤ TON	---	26	---	5	1	---	---	---	32
0103	ASPHALT SEAL COAT	④ TON	---	3.1	---	0.6	0.1	---	---	---	3.8
0356	ASPHALT MATERIAL FOR TACK	TON	4.2	0.6	1.5	0.2	0.1	0.1	0.1	---	6.8
2101	CEMENT CONCRETE ENTRANCE PAVEMENT - 8"	SO. YD.	---	---	---	---	---	107	---	---	107
0020	TRAFFIC BOUND BASE	⑥ TON	---	---	---	---	---	---	---	---	100

PAVING AREAS

ITEM	US 421 TRAFFIC LANES	US 421 SHOULDERS	KY 406 TRAFFIC LANES	KY 406 SHOULDERS	STINNETT WENDOVER ROAD	ENTRANCES	PARKING LOT	KY 406 DIVERSION
	S Q U A R E Y A R D S							
1.25' CL3 ASPHALT SURFACE 0.38D PG 64-22	5,050	700	1,200	190	210	230	222	---
7' CL3 ASPHALT BASE 1.00D PG 64-22	5,050	700	1,200	190	---	---	---	---
3' CL3 ASPHALT BASE 1.00D PG 64-22	---	---	1,200	190	210	230	222	---
4" CRUSHED STONE BASE	5,050	700	1,200	190	---	340	---	---
8" CRUSHED STONE BASE	---	---	---	---	265	---	222	---
12" CRUSHED STONE BASE	---	---	---	---	---	---	---	490
FULL DEPTH CRUSHED STONE BASE (12.25" EQUIVALENT DEPTH)	(A) ---	1,085	---	220	---	---	---	---
ASPHALT SEAL AGGREGATE (TWO APPLICATIONS)	---	1,275	---	250	30	---	---	---
ASPHALT SEAL COAT (TWO APPLICATIONS)	---	1,275	---	250	30	---	---	---
CEMENT CONCRETE ENTRANCE PAVEMENT - 8"	---	---	---	---	---	107	---	---

NOTES:

(A) IRREGULARLY SHAPED CRUSHED STONE BASE WEDGES BEYOND THE PAVEMENT EDGE HAVE BEEN CALCULATED AS VOLUMES USING THE AVERAGE END-AREA METHOD AND HAVE BEEN CONVERTED TO AN EQUIVALENT AREA OF UNIFORM DEPTH.

NOTES

ALL ASHALT MIXTURES SHALL BE ESTIMATED AT 110 LBS. PER SQ. YD. PER INCH OF DEPTH, UNLESS NOTED OTHERWISE.

- ① ESTIMATED AT 115 LBS. PER SQ. YD. PER INCH OF DEPTH.
- ② CLEARING AND GRUBBING ~ 4.0 AC
- ③ FOR CONTROLLING DUST CAUSED BY MAINTAINING TRAFFIC ONLY.
- ④ ESTIMATED AT 2.40 LB/SQ YD (TWO APPLICATIONS)
- ⑤ ESTIMATED AT 20 LB/SQ YD (SIZE NO. 8 OR 9M) - (TWO APPLICATIONS)
- ⑥ FOR MAINTENANCE OF TRAFFIC.
- ⑦ FOR GRAVITY RETAINING WALL AT KY 406 RT. STA. 48+00.50 TO STA. 48+85.00
- ⑧ INCLUDES 2 CU. YD. FROM PIPE DRAINAGE SUMMARY.
- ⑨ 6990 SQ. YD. TO BE USED ON SLOPES STEEPER THAN 3:1
- ⑩ 200 LF ADDED TO KY 406 TOTAL TO BE USED IN PARKING LOT AT RT. STA. 48+00.50 TO STA. 48+85.00
- ⑪ INCLUDES 10% ADDITIONAL MATERIAL ON US 421 AS A CONSTRUCTION TOLERANCE FOR ROCK ROADBED.
- ⑫ TO BE TAKEN TO THE LESLIE COUNTY MAINTENANCE FACILITY.
- ⑬ EXISTING DOUBLE BARREL RCBC AT STA. 110+20, 67' RT.
- ⑭ MODIFIED TO MATCH 4" CURB HEIGHT.
- ⑮ INCLUDES 14 SQ. YD. FROM PIPE DRAINAGE SUMMARY.
- ⑯ THE FOLLOWING QUANTITIES ARE ADDED FOR TEMPORARY CONSTRUCTION ENTRANCES TO BE PLACED AT THE DIRECTION OF THE ENGINEER:

252 SQ. YD. OF GEOTEXILE FABRIC TYPE IV
174 TONS OF CRUSHED AGGREGATE NO. 2

GENERAL & PAVING SUMMARY SHEET

FILE NAME: C:\PWORK\JUSTIN.BALL\1609356.R0020DSU.DGN

USER: Justin.ball
DATE PLOTTED: March 8, 2019

E-SHEET NAME: R0020DSU

MicroStation v8.11.9.832

GENERAL SUMMARY

REVISED 3/11/2019

COUNTY OF	ITEM NO.	SHEET NO.
LESLIE	11-1078.00	R2D

ITEM	DESCRIPTION	UNIT	US 421	KY 406	STINNETT WENDOVER ROAD	PROJECT TOTALS
00078	CRUSHED AGGREGATE SIZE NO. 2	⑩ TON	1			175
01000	PERFORATED PIPE - 4 IN	LF	42			42
01010	NON-PERFORATED PIPE - 4 IN	LF	104			104
01020	PERF PIPE HEADWALL TYPE 1 - 4 IN	EACH	1			1
01691	FLUME INLET TYPE 2 (MODIFIED)	⑭ EACH	1	1		2
01718	REMOVE INLET	EACH	2	1		3
01890	ISLAND HEADER CURB TYPE 1	LF	100			100
01897	ASPHALT WEDGE CURB	LF		94		94
01987	DELINEATOR FOR GUARDRAIL - B/W	EACH	37	6	1	44
01990	DELINEATOR FOR BARRIER WALL - B/W	EACH	6			6
02014	BARRICADE-TYPE III	EACH	10			10
02091	REMOVE PAVEMENT	SOYD	1,112			1,112
02200	ROADWAY EXCAVATION	CU YD	109,261	229	16	109,506
02203	STRUCTURE EXCAVATION - UNCLASSIFIED	⑦ CU YD		19		19
02242	WATER	③ MGAL	415	87	16	518
02351	GUARDRAIL-STEEL W BEAM-S FACE	LF	1,312.5	100		1,412.5
02360	GUARDRAIL TERMINAL SECTION NO 1	EACH	4			4
02363	GUARDRAIL CONNECTOR TO BRIDGE END TYPE A	EACH	4			4
02367	GUARDRAIL END TREATMENT TYPE 1	EACH		1		1
02381	REMOVE GUARDRAIL	⑫ LF	587.5			587.5
02391	GUARDRAIL END TREATMENT TYPE 4A	EACH	1	1		2
02397	TEMPORARY GUARDRAIL	LF		237.5		237.5
02429	R/W MONUMENT TYPE 1	EACH	16			16
02431	WITNESS MONUMENT TYPE 2	EACH	2			2
02432	WITNESS POST	EACH	6			6
02488	CHANNEL LINING CLASS IV	⑧ CUYD	455	10		467
02545	CLEARING AND GRUBBING	② LS				1
02551	CONCRETE CLASS A FOR STEPS	CUYD		0.5		0.5
02555	CONCRETE CLASS B	CUYD		43		43
02562	TEMPORARY SIGNS	SO FT	600	125	25	750
02568	MOBILIZATION	LS				1
02569	DEMOBILIZATION	LS				1
02585	EDGE KEY	LF	50	22	24	96
02596	FABRIC-GEOTEXILE TYPE I	⑮ SOYD		14		28
02599	FABRIC-GEOTEXILE TYPE IV	⑯ SOYD	4,288			4,548
02619	HANDRAIL TYPE A	LF		158		158
02625	REMOVE HEADWALL	EACH	1			2
02650	MAINTAIN & CONTROL TRAFFIC	LS				1
02651	DIVERSIONS (BY-PASS DETOURS)	LS		1		1
02671	PORTABLE CHANGEABLE MESSAGE SIGN	EACH	2	1		3
02673	PRECAST VEHICLE STOP	LF		50		50
02690	SAFELOADING	CU YD	15	8		23
02697	EDGE LINE RUMBLE STRIPS	LF	2,722			2,722
02701	TEMP SILT FENCE	LF	1,664	736		2,400
02704	SILT TRAP TYPE B	EACH	9		1	10
02705	SILT TRAP TYPE C	EACH	4	1		5
02707	CLEAN SILT TRAP TYPE B	EACH	9		1	10
02708	CLEAN SILT TRAP TYPE C	EACH	4	1		5
02720	SIDEWALK-4 IN CONCRETE	SOYD		71		71
02726	STAKING	LS				1
02731	REMOVE STRUCTURE	⑬ LS	1			1
03171	CONCRETE BARRIER WALL TYPE 9T	LF		270		270
04933	TEMPORARY SIGNAL-TWO PHASE	EACH	2			2
05950	EROSION CONTROL BLANKET	⑨ SO YD	7,574	356		7,930
05952	TEMP MULCH	SO YD	4,600	700		5,300
05953	TEMP SEEDING AND PROTECTION	SO YD	4,600	700		5,300
05985	SEEDING AND PROTECTION	SO YD	9,200	1,400		10,600
05963	INITIAL FERTILIZER	TON	0.7	0.2		0.9
05964	20-10-10 FERTILIZER	TON	0.7	0.2		0.9
05992	AGRICULTURAL LIMESTONE	TON	13.1	3.7		16.8
06510	PAVE STRIPING-TEMP PAINT-4 IN	LF	5,140	1,700		6,840
06514	PAVE STRIPING-PERM PAINT-4 IN	⑩ LF	5,140	1,900		7,040
06547	PAVE STRIPING-THERMO-12 IN Y	LF	2,115			2,115
06568	PAVE MARKING-THERMO STOP BAR-24 IN	LF	11	16	20	47
06574	PAVE MARKING-THERMO CURVE ARROW	EACH	4			4
08901	CRASH CUSHION TY VI CLASS BT TL2	EACH		2		2
20206EC	PAVE MARKING-HANDICAP SYMBOL	EACH		1		1
23158E5505	DETECTABLE WARNINGS	SOFT		10		10
10020NS	FUEL ADJUSTMENT	DOLL	30,319			30,319
10030NS	ASPHALT ADJUSTMENT	DOLL	12,878			12,878

PAVING SUMMARY

ITEM CODE	ITEM	UNIT	US 421 TRAFFIC LANES	US 421 SHOULDERS	KY 406 TRAFFIC LANES	KY 406 SHOULDERS	STINNETT WENDOVER ROAD	ENTRANCES	PARKING LOT	KY 406 DIVERSION	TOTAL PROJECT
0339	CL3 ASPHALT SURFACE 0.38D PG 64-22	TON	347	48	83	13	15	16	15	---	537
0214	CL3 ASPHALT BASE 1.00D PG 64-22	TON	1,944	270	660	104	35	38	37	---	3,088
0003	CRUSHED STONE BASE	①⑪ TON	1,278	1,018	276	199	122	78	102	338	3,411
0100	ASPHALT SEAL AGGREGATE	⑤ TON	---	26	---	5	1	---	---	---	32
0103	ASPHALT SEAL COAT	④ TON	---	3.1	---	0.6	0.1	---	---	---	3.8
0356	ASPHALT MATERIAL FOR TACK	TON	4.2	0.6	1.5	0.2	0.1	0.1	0.1	---	6.8
2101	CEMENT CONCRETE ENTRANCE PAVEMENT - 8"	SO. YD.	---	---	---	---	---	107	---	---	107
0020	TRAFFIC BOUND BASE	⑥ TON	---	---	---	---	---	---	---	---	100

REVISED QUANTITIES

PAVING AREAS

ITEM	US 421 TRAFFIC LANES	US 421 SHOULDERS	KY 406 TRAFFIC LANES	KY 406 SHOULDERS	STINNETT WENDOVER ROAD	ENTRANCES	PARKING LOT	KY 406 DIVERSION
S Q U A R E Y A R D S								
1.25' CL3 ASPHALT SURFACE 0.38D PG 64-22	5,050	700	1,200	190	210	230	222	---
7' CL3 ASPHALT BASE 1.00D PG 64-22	5,050	700	1,200	190	---	---	---	---
3' CL3 ASPHALT BASE 1.00D PG 64-22	---	---	1,200	190	210	230	222	---
4" CRUSHED STONE BASE	5,050	700	1,200	190	---	340	---	---
8" CRUSHED STONE BASE	---	---	---	---	265	---	222	---
12" CRUSHED STONE BASE	---	---	---	---	---	---	---	490
FULL DEPTH CRUSHED STONE BASE (12.25" EQUIVALENT DEPTH)	(A) ---	1,085	---	220	---	---	---	---
ASPHALT SEAL AGGREGATE (TWO APPLICATIONS)	---	1,275	---	250	30	---	---	---
ASPHALT SEAL COAT (TWO APPLICATIONS)	---	1,275	---	250	30	---	---	---
CEMENT CONCRETE ENTRANCE PAVEMENT - 8"	---	---	---	---	---	107	---	---

REVISED PAVING QUANTITIES & AREAS

NOTES:

(A) IRREGULARLY SHAPED CRUSHED STONE BASE WEDGES BEYOND THE PAVEMENT EDGE HAVE BEEN CALCULATED AS VOLUMES USING THE AVERAGE END-AREA METHOD AND HAVE BEEN CONVERTED TO AN EQUIVALENT AREA OF UNIFORM DEPTH.

NOTES

ALL ASHALT MIXTURES SHALL BE ESTIMATED AT 110 LBS. PER SQ. YD. PER INCH OF DEPTH, UNLESS NOTED OTHERWISE.

- ① ESTIMATED AT 115 LBS. PER SQ. YD. PER INCH OF DEPTH.
- ② CLEARING AND GRUBBING ~ 4.0 AC
- ③ FOR CONTROLLING DUST CAUSED BY MAINTAINING TRAFFIC ONLY.
- ④ ESTIMATED AT 2.40 LB/SQ YD (TWO APPLICATIONS)
- ⑤ ESTIMATED AT 20 LB/SQ YD (SIZE NO. 8 OR 9M) - (TWO APPLICATIONS)
- ⑥ FOR MAINTENANCE OF TRAFFIC.
- ⑦ FOR GRAVITY RETAINING WALL AT KY 406 RT. STA. 48+00.50 TO STA. 48+85.00
- ⑧ INCLUDES 2 CU. YD. FROM PIPE DRAINAGE SUMMARY.
- ⑨ 6990 SO. YD. TO BE USED ON SLOPES STEEPER THAN 3:1
- ⑩ 200 LF ADDED TO KY 406 TOTAL TO BE USED IN PARKING LOT AT RT. STA. 48+00.50 TO STA. 48+85.00
- ⑪ INCLUDES 10% ADDITIONAL MATERIAL ON US 421 AS A CONSTRUCTION TOLERANCE FOR ROCK ROADBED.
- ⑫ TO BE TAKEN TO THE LESLIE COUNTY MAINTENANCE FACILITY.
- ⑬ EXISTING DOUBLE BARREL RCBC AT STA. 110+20, 67' RT.
- ⑭ MODIFIED TO MATCH 4" CURB HEIGHT.
- ⑮ INCLUDES 14 SO. YD. FROM PIPE DRAINAGE SUMMARY.
- ⑯ THE FOLLOWING QUANTITIES ARE ADDED FOR TEMPORARY CONSTRUCTION ENTRANCES TO BE PLACED AT THE DIRECTION OF THE ENGINEER:

252 SQ. YD. OF GEOTEXILE FABRIC TYPE IV
174 TONS OF CRUSHED AGGREGATE NO. 2

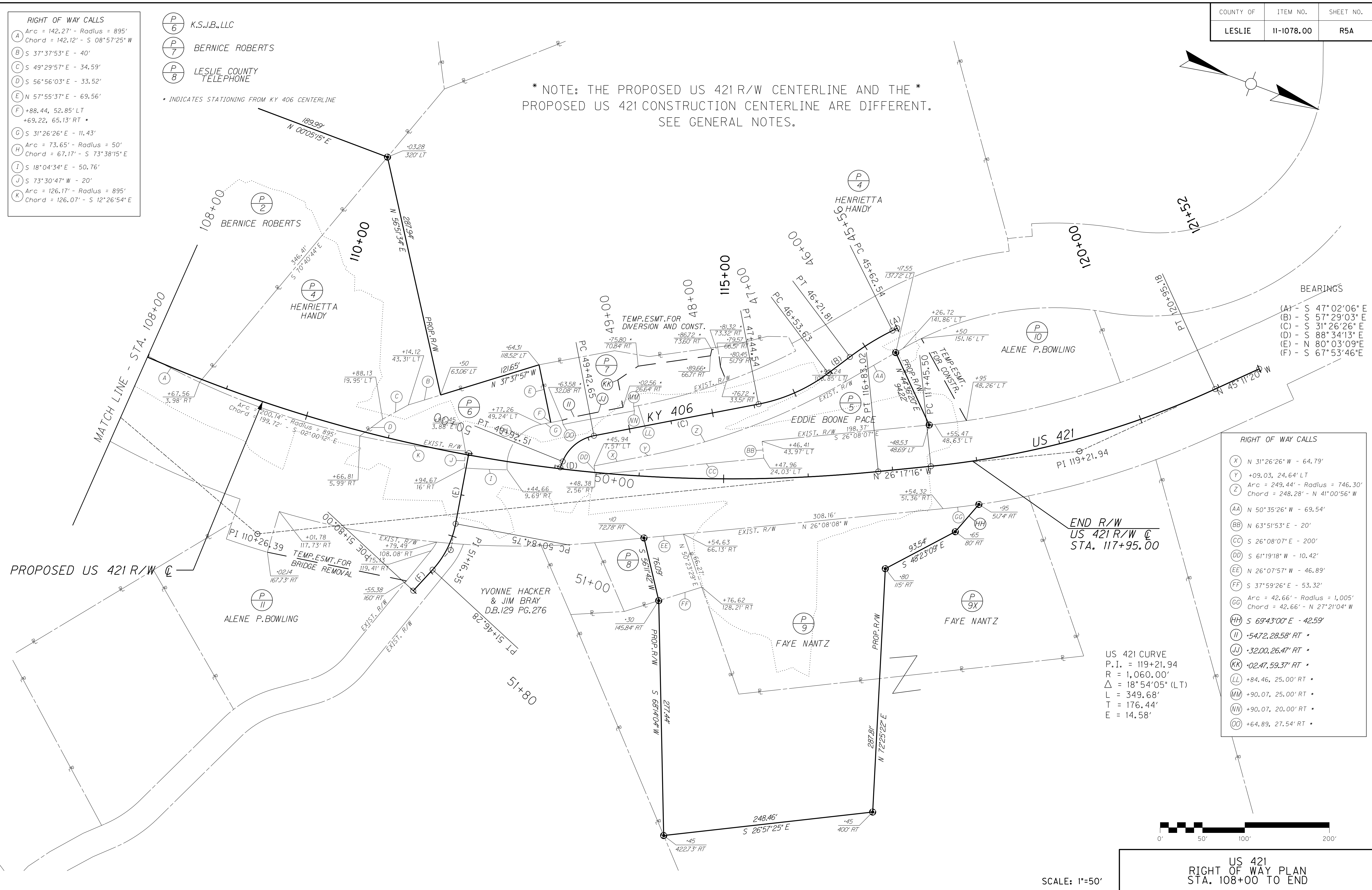
EARTHWORK (CU YD)	
COM EXC	= 107,004
EMB BENCHING	= 2,502
ROADWAY EXCAVATION	= 109,506
ADDITIONAL QUANTITIES	
ROCK ROADBED	= 3,369
EMB	= 4,362
EARTHWORK ESTIMATES ARE FOR INFORMATION PURPOSES ONLY. ASSUMPTIONS FOR SHRINKAGE AND SWELL WERE NOTE INCLUDED AND ARE THE CONTRACTOR'S RESPONSIBILITY.	

- RIGHT OF WAY CALLS**
- (A) Arc = 142.27' - Radius = 895'
Chord = 142.12' - S 08°57'25" W
 - (B) S 37°37'53" E - 40'
 - (C) S 49°29'57" E - 34.59'
 - (D) S 56°56'03" E - 33.52'
 - (E) N 57°55'37" E - 69.56'
 - (F) +88.44, 52.85' LT
+69.22, 65.13' RT *
 - (G) S 31°26'26" E - 11.43'
 - (H) Arc = 73.65' - Radius = 50'
Chord = 67.17' - S 73°38'15" E
 - (I) S 18°04'34" E - 50.76'
 - (J) S 73°30'47" W - 20'
 - (K) Arc = 126.17' - Radius = 895'
Chord = 126.07' - S 12°26'54" E

- (P/6) K.S.J.B., LLC
- (P/7) BERNICE ROBERTS
- (P/8) LESLIE COUNTY TELEPHONE

* INDICATES STATIONING FROM KY 406 CENTERLINE

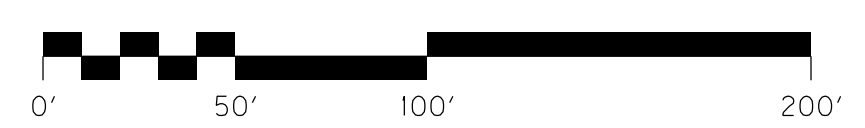
* NOTE: THE PROPOSED US 421 R/W CENTERLINE AND THE *
PROPOSED US 421 CONSTRUCTION CENTERLINE ARE DIFFERENT.
SEE GENERAL NOTES.



- BEARINGS**
- (A) - S 47°02'06" E
 - (B) - S 57°29'03" E
 - (C) - S 31°34'13" E
 - (D) - S 88°34'13" E
 - (E) - N 80°03'09" E
 - (F) - S 67°53'46" E

- RIGHT OF WAY CALLS**
- (X) N 31°26'26" W - 64.79'
 - (Y) +09.03, 24.64' LT
 - (Z) Arc = 249.44' - Radius = 746.30'
Chord = 248.28' - N 41°00'56" W
 - (AA) N 50°35'26" W - 69.54'
 - (BB) N 63°51'53" E - 20'
 - (CC) S 26°08'07" E - 200'
 - (DD) S 61°19'18" W - 10.42'
 - (EE) N 26°07'57" W - 46.89'
 - (FF) S 37°59'26" E - 53.32'
 - (GG) Arc = 42.66' - Radius = 1,005'
Chord = 42.66' - N 27°21'04" W
 - (HH) S 69°43'00" E - 42.59'
 - (II) +54.72, 28.58' RT *
 - (JJ) +32.00, 26.47' RT *
 - (KK) +02.47, 59.37' RT *
 - (LL) +84.46, 25.00' RT *
 - (MM) +90.07, 25.00' RT *
 - (NN) +90.07, 20.00' RT *
 - (OO) +64.89, 27.54' RT *

US 421 CURVE
P.I. = 119+21.94
R = 1,060.00'
Δ = 18°54'05" (LT)
L = 349.68'
T = 176.44'
E = 14.58'



SCALE: 1"=50'

US 421
RIGHT OF WAY PLAN
STA. 108+00 TO END

FILE NAME: C:\PWORK\JUSTIN.BALL\1609356\RO050APL.DGN
 USER: Justin.ball
 DATE PLOTTED: March 8, 2019
 E-SHEET NAME: RO050APL
 MicroStation v8.11.9.832

REVISED 3/11/2019

COUNTY OF	ITEM NO.	SHEET NO.
LESLIE	11-1078.00	R5A

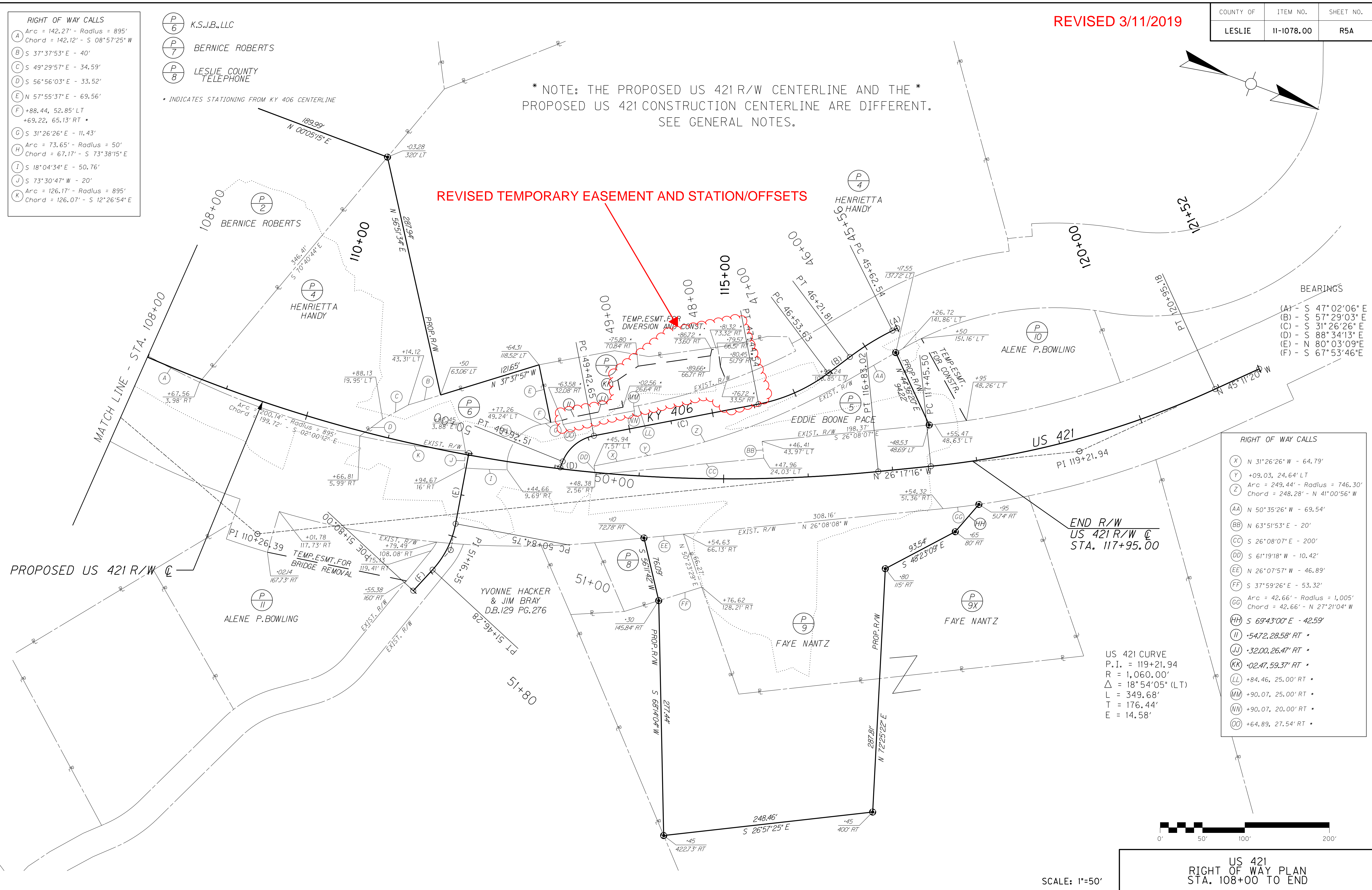
- RIGHT OF WAY CALLS**
- (A) Arc = 142.27' - Radius = 895'
Chord = 142.12' - S 08°57'25" W
 - (B) S 37°37'53" E - 40'
 - (C) S 49°29'57" E - 34.59'
 - (D) S 56°56'03" E - 33.52'
 - (E) N 57°55'37" E - 69.56'
 - (F) +88.44, 52.85' LT
+69.22, 65.13' RT *
 - (G) S 31°26'26" E - 11.43'
 - (H) Arc = 73.65' - Radius = 50'
Chord = 67.17' - S 73°38'15" E
 - (I) S 18°04'34" E - 50.76'
 - (J) S 73°30'47" W - 20'
 - (K) Arc = 126.17' - Radius = 895'
Chord = 126.07' - S 12°26'54" E

- (P/6) K.S.J.B., LLC
- (P/7) BERNICE ROBERTS
- (P/8) LESLIE COUNTY TELEPHONE

* INDICATES STATIONING FROM KY 406 CENTERLINE

* NOTE: THE PROPOSED US 421 R/W CENTERLINE AND THE * PROPOSED US 421 CONSTRUCTION CENTERLINE ARE DIFFERENT. SEE GENERAL NOTES.

REVISED TEMPORARY EASEMENT AND STATION/OFFSETS



- BEARINGS**
- (A) - S 47°02'06" E
 - (B) - S 57°29'03" E
 - (C) - S 31°26'26" E
 - (D) - S 88°34'13" E
 - (E) - N 80°03'09" E
 - (F) - S 67°53'46" E

- RIGHT OF WAY CALLS**
- (X) N 31°26'26" W - 64.79'
 - (Y) +09.03, 24.64' LT
 - (Z) Arc = 249.44' - Radius = 746.30'
Chord = 248.28' - N 41°00'56" W
 - (AA) N 50°35'26" W - 69.54'
 - (BB) N 63°51'53" E - 20'
 - (CC) S 26°08'07" E - 200'
 - (DD) S 61°19'18" W - 10.42'
 - (EE) N 26°07'57" W - 46.89'
 - (FF) S 37°59'26" E - 53.32'
 - (GG) Arc = 42.66' - Radius = 1,005'
Chord = 42.66' - N 27°21'04" W
 - (HH) S 69°43'00" E - 42.59'
 - (II) +54.72, 28.58' RT *
 - (JJ) +32.00, 26.47' RT *
 - (KK) +02.47, 59.37' RT *
 - (LL) +84.46, 25.00' RT *
 - (MM) +90.07, 25.00' RT *
 - (NN) +90.07, 20.00' RT *
 - (OO) +64.89, 27.54' RT *

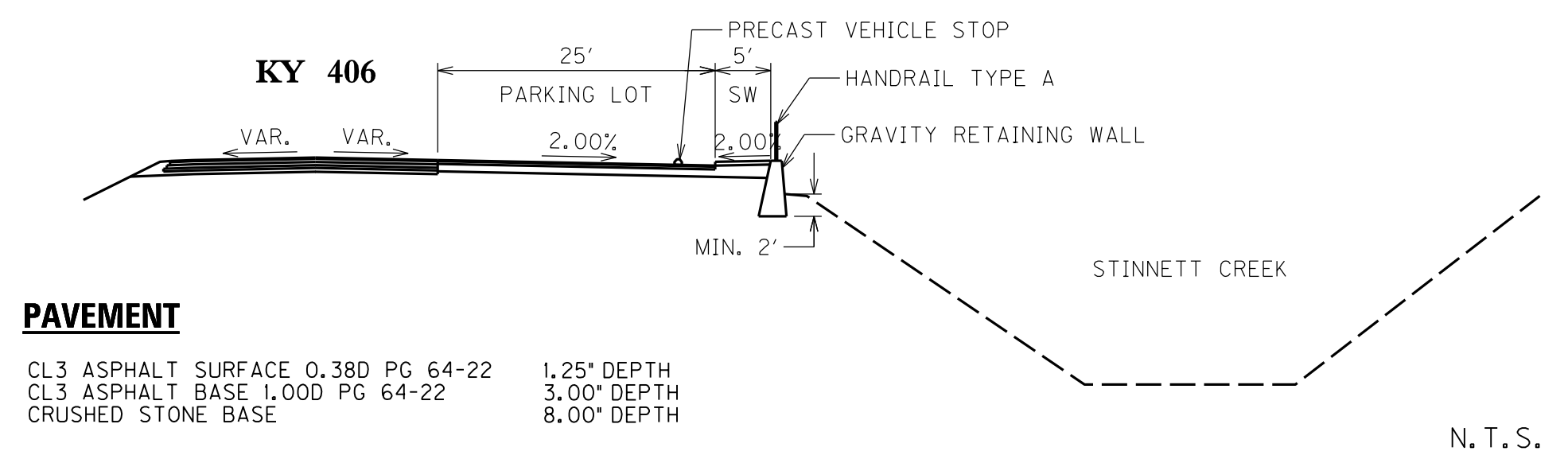
US 421 CURVE
P.I. = 119+21.94
R = 1,060.00'
Δ = 18°54'05" (LT)
L = 349.68'
T = 176.44'
E = 14.58'

SCALE: 1"=50'

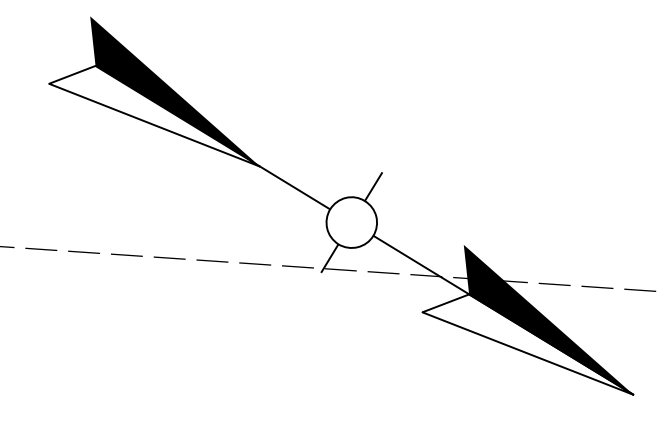
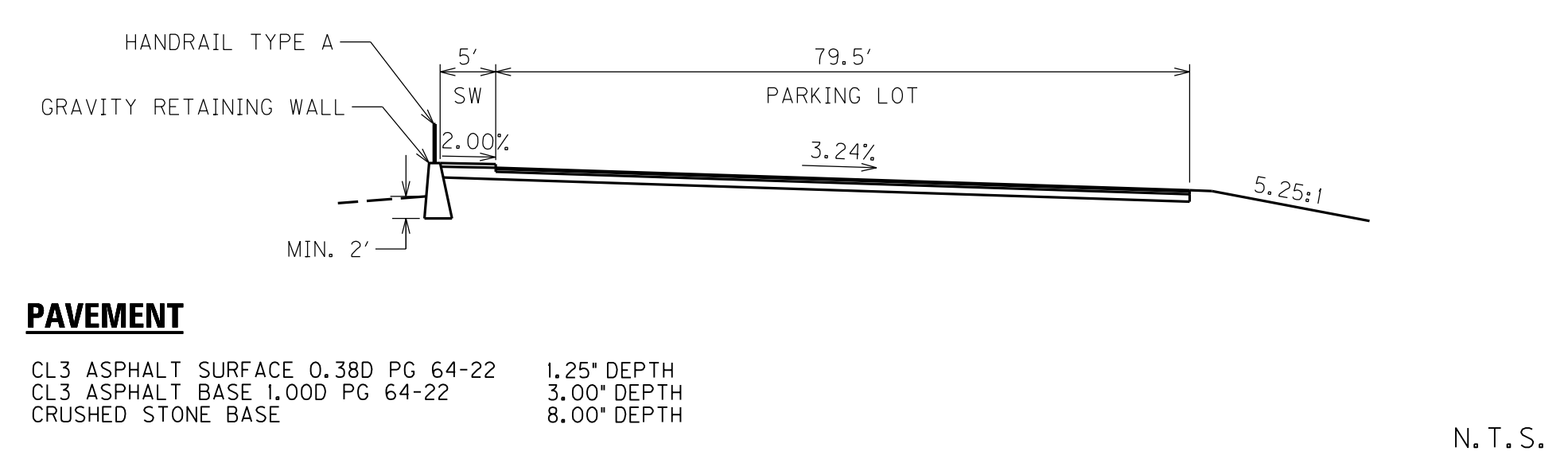
US 421
RIGHT OF WAY PLAN
STA. 108+00 TO END

FILE NAME: C:\PWORK\JUSTIN.BALL\1609356\RO050APL.DGN
USER: Justin.ball
DATE PLOTTED: March 8, 2019
E-SHEET NAME: RO050APL
MicroStation v8.11.9.832

SECTION A-A



SECTION B-B

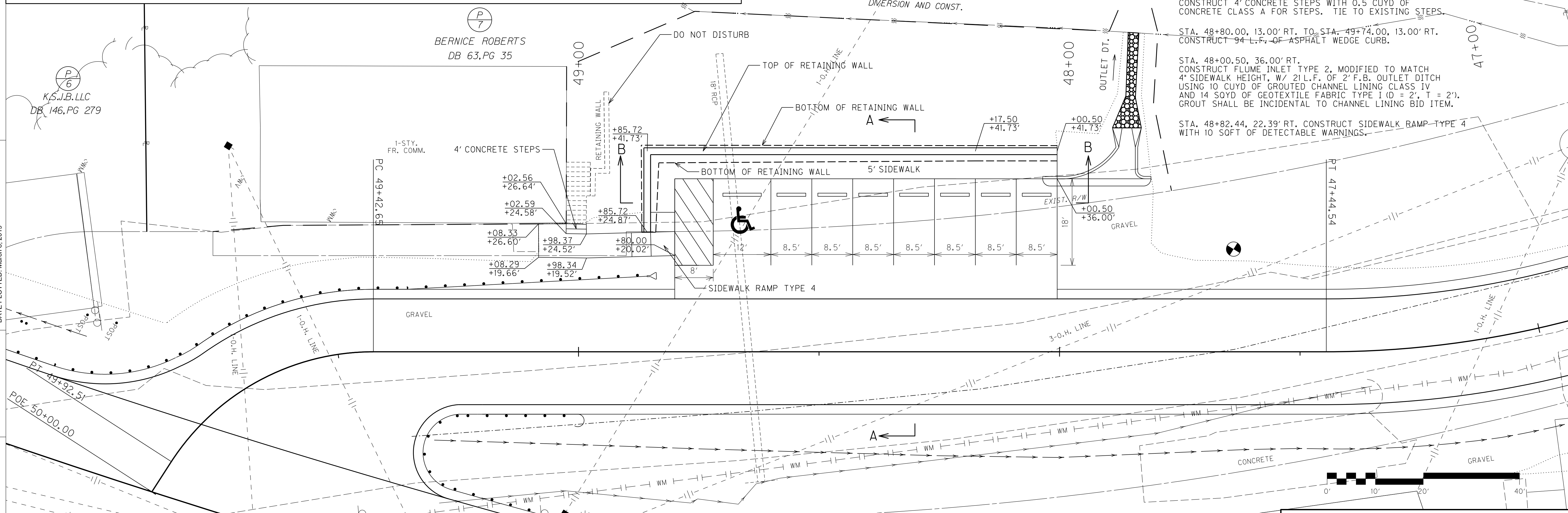


PROPOSED GRAVITY RETAINING WALL PROFILE

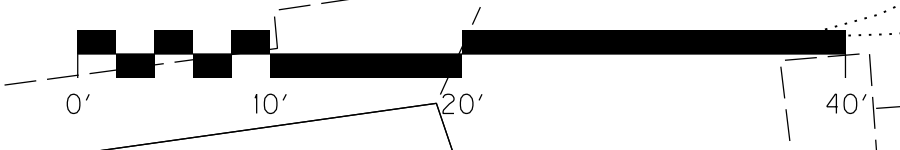
Station	Right-of-Way (RT.)	Height (H)	Elevation
48+00.50	41.73'	5.5'	913.99'
48+17.50	41.73'	5.5'	914.54'
48+85.72	41.73'	6.5'	916.59'
48+85.72	24.87'	5.0'	917.02'
48+01.75	32.67'	-	908.49'
48+09.04	-	-	909.04'
48+85.72	24.87'	-	910.09'
48+85.72	24.87'	-	912.02'

SCALE: 1" = 10' HORIZONTAL
1" = 10' VERTICAL

FILE NAME: C:\PWORK\JUSTIN.BALLID\1609356\R0050BPL.DGN
 USER: justin.ballid
 DATE PLOTTED: March 8, 2019
 E-SHEET NAME: R0050BPL
 MicroStation v8.11.9.832



- STA. 48+00.50, 41.73' RT. TO STA. 48+85.72, 24.87' RT. CONSTRUCT GRAVITY RETAINING WALL W/ 43 CUYD OF CONCRETE CLASS B (SEE STANDARD DRAWING RGX-002-09)
- STA. 48+00.50, 36.00' RT. TO STA. 48+98.37, 24.52' RT. CONSTRUCT 121 L.F. OF HANDRAIL TYPE A.
- STA. 48+80.00, 20.02' RT. TO STA. 49+08.33, 26.60' RT. CONSTRUCT 35 L.F. OF HANDRAIL TYPE A.
- STA. 49+02.59, 24.58' RT. TO STA. 49+02.56, 26.64' RT. CONSTRUCT 2 L.F. OF HANDRAIL TYPE A.
- STA. 48+01.75, 32.67' RT. TO STA. 48+70.00, 32.67' RT. CONSTRUCT 7 - 6' PRECAST VEHICLE STOPS AND 1 - 8' PRECAST VEHICLE STOP.
- STA. 48+00.50, 38.50' RT. TO STA. 49+05.44, 26.62' RT. CONSTRUCT 71 SQYD OF 4" CONCRETE SIDEWALK.
- STA. 49+00.47, 25.55' RT. CONSTRUCT 4' CONCRETE STEPS WITH 0.5 CUYD OF CONCRETE CLASS A FOR STEPS. TIE TO EXISTING STEPS.
- STA. 48+80.00, 13.00' RT. TO STA. 49+74.00, 13.00' RT. CONSTRUCT 94 L.F. OF ASPHALT WEDGE CURB.
- STA. 48+00.50, 36.00' RT. CONSTRUCT FLUME INLET TYPE 2, MODIFIED TO MATCH 4' SIDEWALK HEIGHT, W/ 21 L.F. OF 2' F.B. OUTLET DITCH USING 10 CUYD OF GROUTED CHANNEL LINING CLASS IV AND 14 SQYD OF GEOTEXTILE FABRIC TYPE I (D = 2', T = 2'). GROUT SHALL BE INCIDENTAL TO CHANNEL LINING BID ITEM.
- STA. 48+82.44, 22.39' RT. CONSTRUCT SIDEWALK RAMP TYPE 4 WITH 10 SQFT OF DETECTABLE WARNINGS.



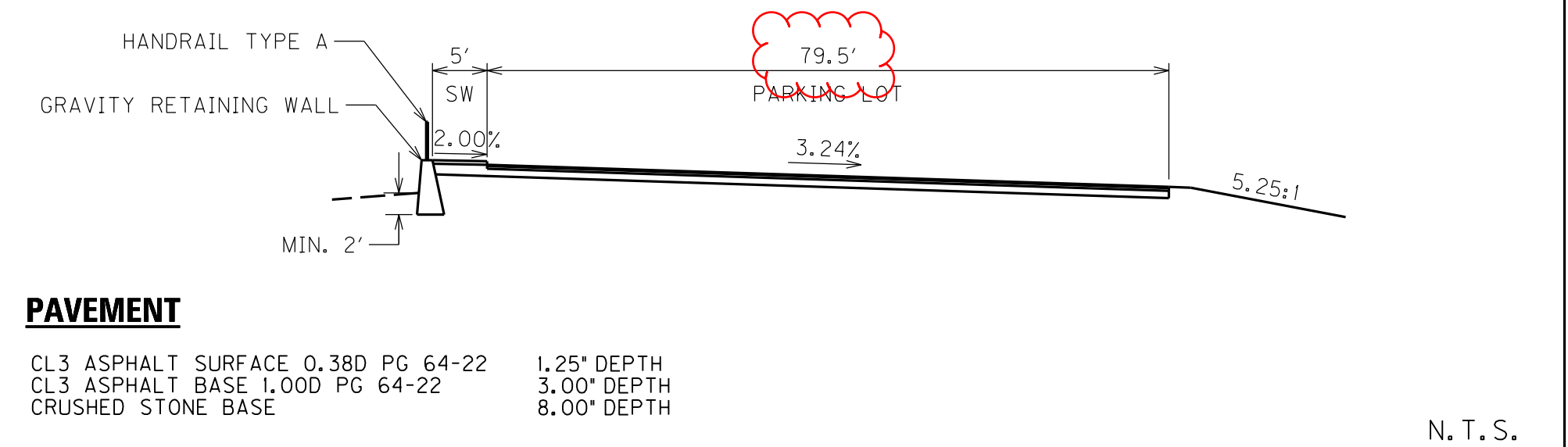
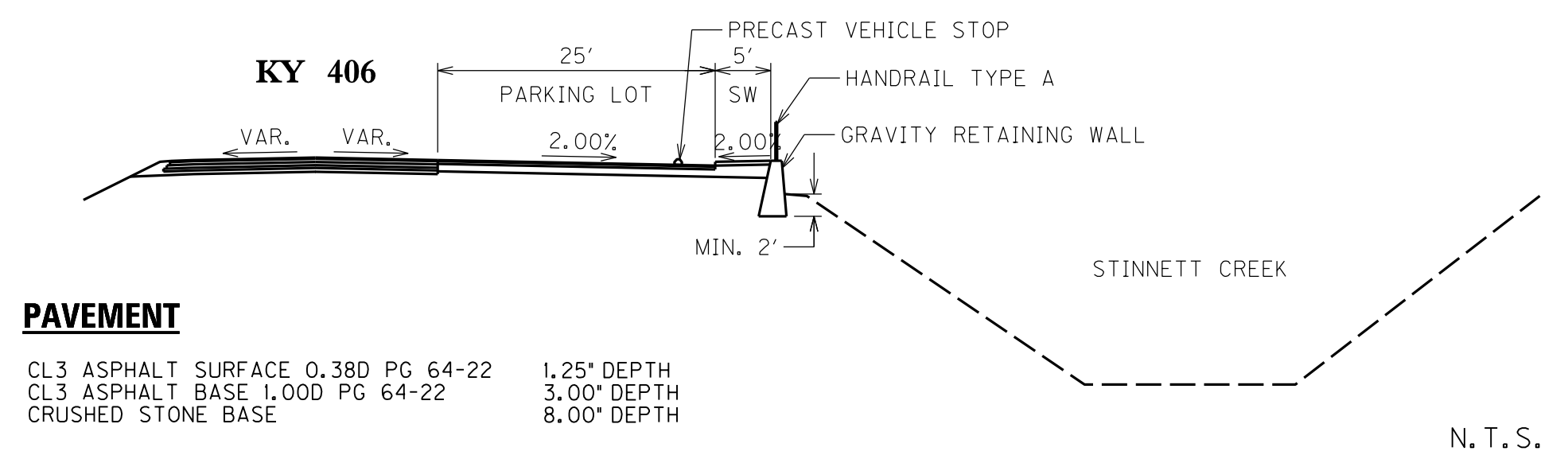
SCALE: 1"=10'

PARKING LOT
PLAN SHEET

REVISED 3/11/2019

SECTION A-A

SECTION B-B



PROPOSED GRAVITY RETAINING WALL PROFILE

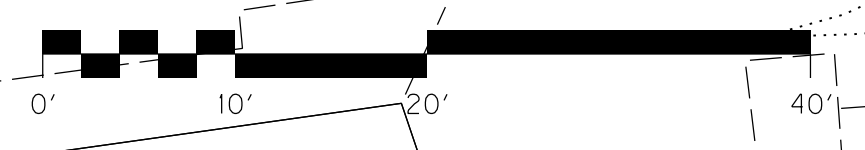
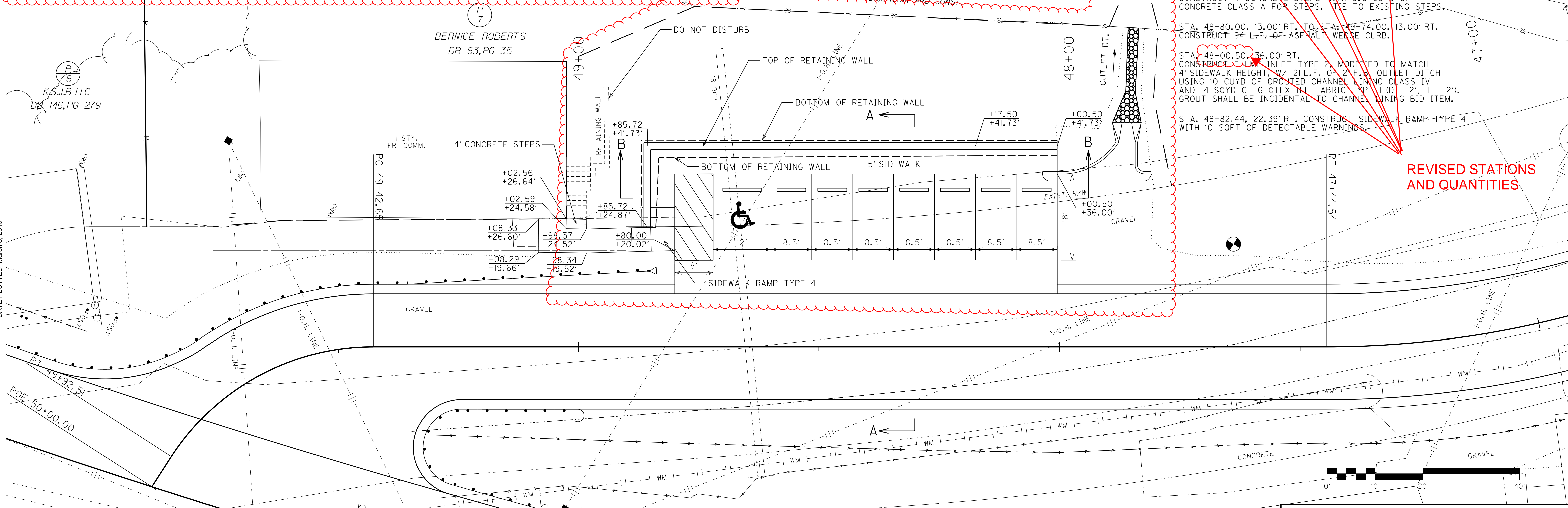
930	STA. 48+00.50 41.73' RT. H = 5.5' ELEV. = 913.99'	STA. 48+17.50 41.73' RT. H = 5.5' ELEV. = 914.54'	STA. 48+85.72 41.73' RT. H = 6.5' ELEV. = 916.59'	STA. 48+85.72 24.87' RT. H = 5.0' ELEV. = 917.02'	930
920					920
910					910
900	ELEV. = 908.49'	ELEV. = 909.04'	ELEV. = 910.09'	ELEV. = 912.02'	900

REVISED PROFILE SCALE: 1" = 10' HORIZONTAL
1" = 10' VERTICAL

REVISED TEMPORARY EASEMENT, ADDED TWO ADDITIONAL PARKING SPACES, EXTENDED RETAINING WALL, MOVED FLUME

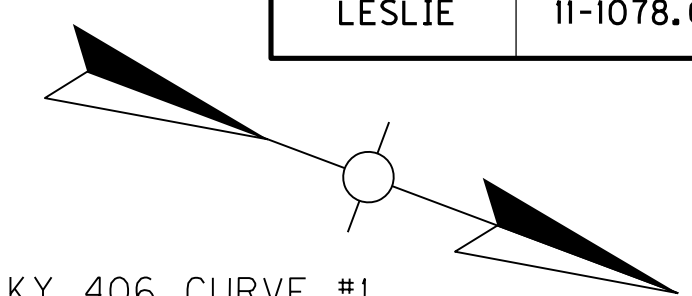
- REVISED STATIONS AND QUANTITIES**
- STA. 48+00.50, 41.73' RT. TO STA. 48+85.72, 24.87' RT. CONSTRUCT GRAVITY RETAINING WALL W/ 43 CUYD OF CONCRETE CLASS B (SEE STANDARD DRAWING RGX-002-09)
 - STA. 48+00.50, 36.00' RT. TO STA. 48+98.37, 24.52' RT. CONSTRUCT 121 L.F. OF HANDRAIL TYPE A.
 - STA. 48+80.00, 20.02' RT. TO STA. 49+08.33, 26.60' RT. CONSTRUCT 35 L.F. OF HANDRAIL TYPE A.
 - STA. 49+02.59, 24.58' RT. TO STA. 49+02.56, 26.64' RT. CONSTRUCT 2 L.F. OF HANDRAIL TYPE A.
 - STA. 48+01.75, 32.67' RT. TO STA. 48+70.00, 32.67' RT. CONSTRUCT 7 - PRECAST VEHICLE STOPS AND 8 - PRECAST VEHICLE STOPS
 - STA. 48+00.50, 38.50' RT. TO STA. 49+05.44, 26.62' RT. CONSTRUCT 71 SQYD OF 4" CONCRETE SIDEWALK.
 - STA. 49+00.47, 25.55' RT. CONSTRUCT 4' CONCRETE STEPS WITH 0.5 CUYD OF CONCRETE CLASS A FOR STEPS. TIE TO EXISTING STEPS.
 - STA. 48+80.00, 13.00' RT. TO STA. 49+74.00, 13.00' RT. CONSTRUCT 94 L.F. OF ASPHALT WEDGE CURB.
 - STA. 48+00.50, 36.00' RT. CONSTRUCT 4" SIDEWALK INLET TYPE 2, MODIFIED TO MATCH 4" SIDEWALK HEIGHT, W/ 21 L.F. OF 2' F.B. OUTLET DITCH USING 10 CUYD OF GROUTED CHANNEL LINING CLASS IV AND 14 SQYD OF GEOTEXTILE FABRIC TYPE I (D = 2', T = 2'). GROUT SHALL BE INCIDENTAL TO CHANNEL LINING BID ITEM.
 - STA. 48+82.44, 22.39' RT. CONSTRUCT SIDEWALK RAMP TYPE 4 WITH 10 SQFT OF DETECTABLE WARNINGS.

FILE NAME: C:\PWORK\JUSTIN.BALLID\1609356\R0050BPL.DGN
 USER: justin.ballid
 DATE PLOTTED: March 8, 2019
 E-SHEET NAME: R0050BPL
 MicroStation v8.11.9.632



PARKING LOT
PLAN SHEET

SCALE: 1"=10'



STEEL "W" BEAM GUARDRAIL
 LT. STA. 108+81.76 (22.21' LT.) TO STA. 110+33.56 (22.00' LT.), CONSTR. 112.5 L.F. W/ 1- GUARDRAIL END TREATMENT TYPE 4A AND 1- GUARDRAIL CONN. TO BRIDGE END TYPE A W/ 25 L.F. ISLAND HEADER CURB TYPE I.
 LT. STA. 111+54.37 (20.50' LT.) TO RT. STA. 48+83.82 (15.80' RT.), CONSTR. 200 L.F. W/ 1- GUARDRAIL CONN. TO BRIDGE END TYPE A W/ 25 L.F. ISLAND HEADER CURB TYPE I AND 1- END TREATMENT TYPE I.
 LT. STA. 48+87.28 (13.00' LT.) TO LT. STA. 117+40.00 (15.83' LT.), CONSTR. 400 L.F. W/ 1- GUARDRAIL END TREATMENT TYPE 4A. TIE TO EXISTING GUARDRAIL.

LT. STA. 110+02.42: CONST. FLUME TYPE 2 (MODIFIED TO HAVE 4' CURB HEIGHT).

DITCH CONSTRUCTION - LEFT ☺					
STATION TO STATION	SIZE-SHAPE TYPE	LINING			
		TYPE	D	T	QUANTITY
STA. 108+00 TO STA. 110+65	SPCL. 14' F.B.	ROCK CUT	---	---	---
STA. 111+70 TO STA. 112+80	SPCL. "V"	ECB	2.0'	---	105 SQ. YD.
STA. 46+06 TO STA. 49+15	SPCL. "V"	ECB	2.0'	---	306 SQ. YD.

KY 406 STA. 45+75 CONSTRUCT 22 L.F. EDGE KEY.

KY 406 CURVE #2
 P.I. = 46+99.88
 R = 200.00'
 D = 26° 02' 36" (RT)
 L = 90.91'
 T = 46.25'
 E = 5.28'
 Se = see cross sections

KY 406 CURVE #1
 P.I. = 45+92.26
 R = 325.00'
 D = 10° 26' 57" (LT)
 L = 59.27'
 T = 29.72'
 E = 1.26'
 Se = see cross sections

*** DO NOT DISTURB TELEPHONE COMPANY BUILDING ***

- (P/6) K.S.J.B., LLC
- (P/7) BERNICE ROBERTS
- (P/8) LESLIE COUNTY TELEPHONE

☺ STA. 111+95.00 US 421 =
 ☺ STA. 50+00 STINNETT WENDOVER RD.

KY 406 CURVE #3
 P.I. = 49+69.87
 R = 50.00'
 D = 57° 07' 47" (LT)
 L = 49.86'
 T = 27.22'
 E = 6.93'
 Se = see cross-sections

BEGIN CONSTRUCTION
 KY 406 ☺ STA. 45+75.00

END CONSTRUCTION
 US 421 ☺ STA. 117+40.00

US 421 STA. 117+40 CONSTRUCT 26 L.F. EDGE KEY.

- BEARINGS
- (A) - S 47° 02' 06" E
 - (B) - S 57° 29' 03" E
 - (C) - S 31° 26' 26" E
 - (D) - S 88° 34' 13" E
 - (E) - N 80° 03' 09" E
 - (F) - S 67° 53' 46" E

PAVEMENT TRANSITIONS (US 421)			
LT./RT. STA. - STA.	LENGTH	TYPE	
RT. 108+67 - 109+66	99'	SHOULDER	
LT. 109+20 - 110+08	88'	SHOULDER	
LT. 111+80 - 112+30	50'	SHOULDER	
LT. 114+32 - 117+35	303'	EOP	
RT. 114+32 - 117+35	303'	EOP	
PAVEMENT TRANSITIONS (KY 406)			
LT. 45+75 - 46+00	25'	EOP	
LT. 45+75 - 46+00	25'	SHOULDER	
RT. 45+75 - 46+00	25'	EOP	
RT. 45+75 - 46+00	25'	SHOULDER	

US 421 CURVE #2
 P.I. = 119+21.94
 R = 1,060.00'
 Δ = 18° 54' 05" (LT)
 L = 349.68'
 T = 176.44'
 E = 14.58'
 Se = Special transitions - see cross sections

DITCH CONSTRUCTION - RIGHT ☺					
STATION TO STATION	SIZE-SHAPE TYPE	LINING			
		TYPE	D	T	QUANTITY
STA. 108+00 TO STA. 109+90	SPCL. "V"	ECB	2.0'	---	180 SQ. YD.
STA. 110+90 TO STA. 111+65	2' F.B.	CLASS IV	2.0'	2.0'	40 CUYD
STA. 112+25 TO STA. 112+85	2' F.B.	CLASS IV	2.0'	2.0'	30 CUYD
STA. 115+00 TO STA. 117+40	2' F.B.	CLASS IV	2.0'	2.0'	130 CUYD

RT. STA. 108+05.67 TO STA. 109+13.47
 REMOVE 112.5 L.F. OF GUARDRAIL
 RT. STA. 109+31.16 TO STA. 110+79.17
 REMOVE 200 L.F. OF GUARDRAIL
 RT. STA. 110+17.28 TO STA. 110+91.33
 REMOVE 75 L.F. OF GUARDRAIL

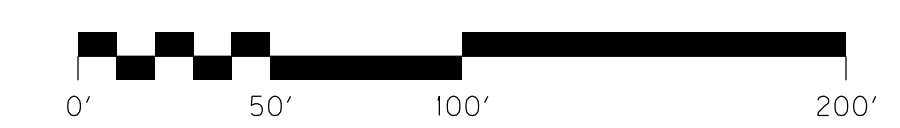
US 421 CURVE #1
 P.I. = 110+26.39
 R = 1,730.00'
 Δ = 46° 09' 54" (LT)
 L = 1,393.91'
 T = 737.28'
 E = 150.55'
 Se = 6.4% w/Special transitions - see cross sections

STINNETT WENDOVER RD.
 P.I. = 51+16.35
 R = 110.00'
 Δ = 32° 03' 05" (RT)
 L = 61.53'
 T = 31.60'
 E = 4.45'
 Se = N/A

YVONNE HACKER & JIM BRAY
 D.B.129 PG.276

ENTRANCE
 RT. STA. 113+14
 CONSTRUCT 20' ENTR. @ 0° SKEW W/ 7' S.Y. ASPHALT & NO PIPE.

STINNETT WENDOVER RD. LT. STA. 50+62
 CONSTRUCT 20' ENTR. W/ 10' S.Y. CONCRETE & NO PIPE SEE COORDINATE CONTROL FOR ALIGNMENT.



US 421
 STA. 108+00 TO END

SCALE: 1"=50'

FILE NAME: C:\PWORK\JUSTIN.BALL\1609356.R00500PL.DGN
 USER: Justin.ball
 DATE PLOTTED: March 8, 2019
 E-SHEET NAME: R00500PL
 MicroStation v8.11.9.832

REVISED 3/11/2019

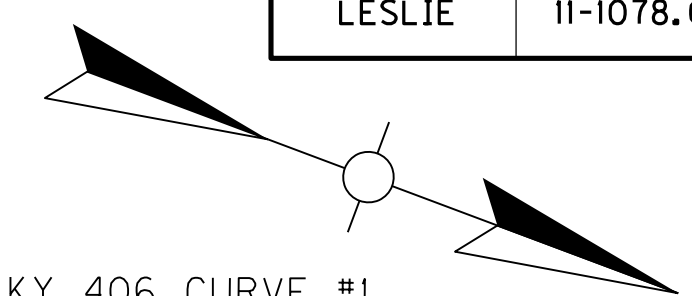
COUNTY OF	ITEM NO.	SHEET NO.
LESLIE	11-1078.00	R5

DITCH CONSTRUCTION - LEFT ☺					
STATION TO STATION	SIZE-SHAPE TYPE	LINING			
		TYPE	D	T	QUANTITY
STA. 108+00 TO STA. 110+65	SPCL. 14" F.B.	ROCK CUT	---	---	---
STA. 111+70 TO STA. 112+80	SPCL. "V"	ECB	2.0'	---	105 SQ. YD.
STA. 46+06 TO STA. 49+15	SPCL. "V"	ECB	2.0'	---	306 SQ. YD.

KY 406 STA. 45+75 CONSTRUCT 22 L.F. EDGE KEY.

KY 406 CURVE #2
P.I. = 46+99.88
R = 200.00'
D = 26° 02' 36" (RT)
L = 90.91'
T = 46.25'
E = 5.28'

KY 406 CURVE #1
P.I. = 45+92.26
R = 325.00'
D = 10° 26' 57" (LT)
L = 59.27'
T = 29.72'
E = 1.26'



STEEL "W" BEAM GUARDRAIL
LT. STA. 108+81.76 (22.21' LT.) TO STA. 110+33.56 (22.00' LT.), CONSTR. 112.5 L.F. W/ 1 - GUARDRAIL END TREATMENT TYPE 4A AND 1 - GUARDRAIL CONN. TO BRIDGE END TYPE A W/ 25 L.F. ISLAND HEADER CURB TYPE I.
LT. STA. 111+54.37 (20.50' LT.) TO RT. STA. 48+83.82 (15.80' RT.), CONSTR. 200 L.F. W/ 1 - GUARDRAIL CONN. TO BRIDGE END TYPE A W/ 25 L.F. ISLAND HEADER CURB TYPE I AND 1 - END TREATMENT TYPE I.
LT. STA. 48+87.28 (13.00' LT.) TO LT. STA. 117+40.00 (15.83' LT.), CONSTR. 400 L.F. W/ 1 - GUARDRAIL END TREATMENT TYPE 4A. TIE TO EXISTING GUARDRAIL.

LT. STA. 110+02.42: CONST. FLUME TYPE 2 (MODIFIED TO HAVE 4" CURB HEIGHT).

STA. 110+71.51
PROPOSED 115' SINGLE SPAN BRIDGE W/ TYPE V PCI BEAMS @ 44" SK. RT. SEE STRUCTURAL PLANS FOR DETAILS

ENTRANCE

KY 406 LT. STA. 45+60, CONSTRUCT 12' ENTR. @ 0° SKEW W/ 54 S.Y. ASPHALT & NO PIPE.

KY 406 RT. STA. 45+79, CONSTRUCT 9' ENTR. @ 16° SKEW W/ 29 S.Y. ASPHALT & NO PIPE.

☺ STA. 111+95.00 US 421 =
☺ STA. 50+00 STINNETT WENDOVER RD.

KY 406 CURVE #3
P.I. = 49+69.87
R = 50.00'
D = 57° 07' 47" (LT)
L = 49.86'
T = 27.22'
E = 6.93'

REVISED TEMPORARY EASEMENT, ADDED TWO PARKING SPACES, MOVED FLUME

BEGIN CONSTRUCTION KY 406 ☺ STA. 45+75.00

END CONSTRUCTION US 421 ☺ STA. 117+40.00

US 421 STA. 117+40 CONSTRUCT 26 L.F. EDGE KEY.

BEARINGS

(A)	- S 47° 02' 06" E
(B)	- S 57° 29' 03" E
(C)	- S 31° 26' 26" E
(D)	- S 88° 34' 13" E
(E)	- N 80° 03' 09" E
(F)	- S 67° 53' 46" E

*** DO NOT DISTURB TELEPHONE COMPANY BUILDING ***

- K.S.J.B., LLC
- BERNICE ROBERTS
- LESLIE COUNTY TELEPHONE

FILE NAME: C:\PWORK\JUSTIN.BALL\1609356.R00500PL.DGN

USER: Justin.ball
DATE PLOTTED: March 8, 2019

E-SHEET NAME: R00500PL

MicroStation v8.11.9.832

RT. STA. 108+05.67 TO STA. 109+13.47 REMOVE 112.5 L.F. OF GUARDRAIL
RT. STA. 109+31.16 TO STA. 110+79.17 REMOVE 200 L.F. OF GUARDRAIL
RT. STA. 110+17.28 TO STA. 110+91.33 REMOVE 75 L.F. OF GUARDRAIL

US 421 CURVE #1
P.I. = 110+26.39
R = 1,730.00'
Δ = 46° 09' 54" (LT)
L = 1,393.91'
T = 737.28'
E = 150.55'
Se = 6.4% w/Special transitions - see cross sections

STINNETT WENDOVER RD.
P.I. = 51+16.35
R = 110.00'
Δ = 32° 03' 05" (RT)
L = 61.53'
T = 31.60'
E = 4.45'
Se = N/A

YVONNE HACKER & JIM BRAY
D.B.129 PG.276

DITCH CONSTRUCTION - RIGHT ☺					
STATION TO STATION	SIZE-SHAPE TYPE	LINING			
		TYPE	D	T	QUANTITY
STA. 108+00 TO STA. 109+90	SPCL. "V"	ECB	2.0'	---	180 SQ. YD.
STA. 110+90 TO STA. 111+65	2' F.B.	CLASS IV	2.0'	2.0'	40 CUYD
STA. 112+25 TO STA. 112+85	2' F.B.	CLASS IV	2.0'	2.0'	30 CUYD
STA. 115+00 TO STA. 117+40	2' F.B.	CLASS IV	2.0'	2.0'	130 CUYD

STINNETT WENDOVER RD. STA. 50+77 CONSTRUCT 24 L.F. EDGE KEY.

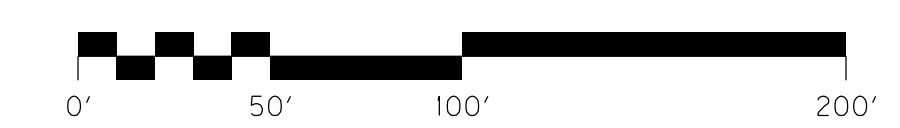
REMOVE EXISTING STRUCTURE (STA. 110+20, 67' RT.) - THE EXISTING OBL-BARREL CULVERT SHALL BE REMOVED IN ACCORDANCE WITH THE STANDARD SPECS. AND STRUCTURE DETAILS. REGRADE AND RESTORE AREA PER ENGINEER INSTRUCTIONS.

ENTRANCE

RT. STA. 113+14, CONSTRUCT 20' ENTR. @ 0° SKEW W/ 71 S.Y. ASPHALT & NO PIPE.

STINNETT WENDOVER RD. LT. STA. 50+62, CONSTRUCT 20' ENTR. W/ 107' S.Y. CONCRETE & NO PIPE SEE COORDINATE CONTROL FOR ALIGNMENT.

SCALE: 1"=50'



US 421
STA. 108+00 TO END

COORDINATE CONTROL POINTS

POINT	DESCRIPTION	State Plane Coordinates			*STATION and OFFSET
		NORTH (Y)	EAST (X)	ELEV. (Z)	
C.P. #1	IRON PIN & CAP	3,564,428.4705	5,607,844.7924	910.77	104+61.32, 28.80' Right
C.P. #2	IRON PIN & CAP	3,564,917.3516	5,608,219.6245	897.12	109+37.69, 350.90' Right
C.P. #3	HUB & TACK	3,564,904.2983	5,607,952.3527	914.03	109+32.37, 83.38' Right
C.P. #4	IRON PIN & CAP	3,565,300.4070	5,607,827.9440	920.75	113+31.53, 15.12' Right
C.P. #5	IRON PIN & CAP	3,565,619.9660	5,607,468.5560	907.96	117+83.85, 200.91' Left

* NOTE: STATIONS AND OFFSETS ARE BASED OFF R/W REFERENCE ALIGNMENT

KY 406 CURVE #2
 P.I. = 46+99.88
 R = 200.00'
 D = 26°02'36" (RT)
 L = 90.91'
 T = 46.25'
 E = 5.28'
 Se = see cross sections



- MARSHALL NAPIER
- EDDIE BOONE PACE
- K.S.J.B.,LLC
- BERNICE ROBERTS
- LESLIE COUNTY TELEPHONE
- ALENE P.BOWLING
- ALENE P.BOWLING

KY 406 CURVE #3
 P.I. = 49+69.87
 R = 50.00'
 D = 57°07'47" (LT)
 L = 49.86'
 T = 27.22'
 E = 6.93'
 Se = see cross-sections

KY 406 CURVE #1
 P.I. = 45+92.26
 R = 325.00'
 D = 10°26'57" (LT)
 L = 59.27'
 T = 29.72'
 E = 1.26'
 Se = see cross sections

US 421 CURVE #2
 P.I. = 119+21.94
 R = 1,060.00'
 Δ = 18°54'05" (LT)
 L = 349.68'
 T = 176.44'
 E = 14.58'
 Se = Special transitions
 - see cross sections

- BEARINGS**
- (A) S 47°02'06" E
 - (B) S 57°29'03" E
 - (C) S 31°26'26" E
 - (D) S 88°34'13" E
 - (E) N 80°03'09" E
 - (F) S 67°53'46" E
 - (G) S 43°59'03" W
 - (H) S 09°56'51" E

BEGIN R/W
US 421 R/W @
STA. 101+48.17

END R/W
US 421 R/W @ STA. 117+95.00

US 421 CURVE #1
 P.I. = 110+26.39
 R = 1,730.00'
 Δ = 46°09'54" (LT)
 L = 1,393.91'
 T = 737.28'
 E = 150.55'
 Se = 6.4% w/Special transitions
 - see cross sections

PROJECT COORDINATES

Coordinates for horizontal control were obtained from GPS methods and adjusted to the National NAD83/FBN System.

Coordinates are based on State Plane Coordinate System Single Zone and in U.S. Survey Feet.

BASIS OF ELEVATIONS

Elevations were derived from GPS methods and are adjusted to the NAVD88 Vertical Datum. Geoid model used was Geoid09.

FILE NAME: C:\PWORK\JUSTIN.BALL\1609356\RO0900RW.DGN

USER: Justin.ball
DATE PLOTTED: March 8, 2019

E-SHEET NAME: RO0900RW

MicroStation v8.11.9.832



SCALE: 1"=100'

US 421
COORDINATE CONTROL
& R/W STRIP MAP

REVISED 3/11/2019

COORDINATE CONTROL POINTS

POINT	DESCRIPTION	State Plane Coordinates			*STATION and OFFSET
		NORTH (Y)	EAST (X)	ELEV. (Z)	
C.P. #1	IRON PIN & CAP	3,564,428.4705	5,607,844.7924	910.77	104+61.32, 28.80' Right
C.P. #2	IRON PIN & CAP	3,564,917.3516	5,608,219.6245	897.12	109+37.69, 350.90' Right
C.P. #3	HUB & TACK	3,564,904.2983	5,607,952.3527	914.03	109+32.37, 83.38' Right
C.P. #4	IRON PIN & CAP	3,565,300.4070	5,607,827.9440	920.75	113+31.53, 15.12' Right
C.P. #5	IRON PIN & CAP	3,565,619.9660	5,607,468.5560	907.96	117+83.85, 200.91' Left

* NOTE: STATIONS AND OFFSETS ARE BASED OFF R/W REFERENCE ALIGNMENT

KY 406 CURVE #2
P.I. = 46+99.88
R = 200.00'
D = 26°02'36" (RT)
L = 90.91'
T = 46.25'
E = 5.28'
Se = see cross sections



- MARSHALL NAPIER
- EDDIE BOONE PACE
- K.S.J.B.,LLC
- BERNICE ROBERTS
- LESLIE COUNTY TELEPHONE
- ALENE P.BOWLING
- ALENE P.BOWLING

KY 406 CURVE #3
P.I. = 49+69.87
R = 50.00'
D = 57°07'47" (LT)
L = 49.86'
T = 27.22'
E = 6.93'
Se = see cross-sections

KY 406 CURVE #1
P.I. = 45+92.26
R = 325.00'
D = 10°26'57" (LT)
L = 59.27'
T = 29.72'
E = 1.26'
Se = see cross sections

REVISED TEMPORARY EASEMENT

US 421 CURVE #2
P.I. = 119+21.94
R = 1,060.00'
Δ = 18°54'05" (LT)
L = 349.68'
T = 176.44'
E = 14.58'
Se = Special transitions
- see cross sections

- BEARINGS
- (A) S 47°02'06" E
 - (B) S 57°29'03" E
 - (C) S 31°26'26" E
 - (D) S 88°34'13" E
 - (E) N 80°03'09" E
 - (F) S 67°53'46" E
 - (G) S 43°59'03" W
 - (H) S 09°56'51" E

US 421 CURVE #1
P.I. = 110+26.39
R = 1,730.00'
Δ = 46°09'54" (LT)
L = 1,393.91'
T = 737.28'
E = 150.55'
Se = 6.4% w/Special transitions
- see cross sections

PROJECT COORDINATES

Coordinates for horizontal control were obtained from GPS methods and adjusted to the National NAD83/FBN System.

Coordinates are based on State Plane Coordinate System Single Zone and in U.S. Survey Feet.

BASIS OF ELEVATIONS

Elevations were derived from GPS methods and are adjusted to the NAVD88 Vertical Datum. Geoid model used was Geoid09.

FILE NAME: C:\PWORK\JUSTIN.BALL\1609356\RO0900RW.DGN
USER: Justin.ball
DATE PLOTTED: March 8, 2019
E-SHEET NAME: RO0900RW
MicroStation v8.11.9.832



SCALE: 1"=100'

US 421
COORDINATE CONTROL
& R/W STRIP MAP